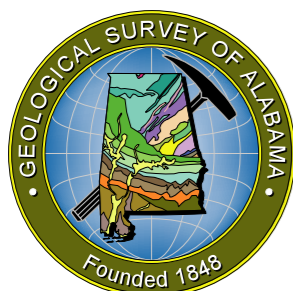


Strategic Habitat and River Reach Units for Aquatic Species of Conservation Concern in Alabama and Adjoining States

by

E. Anne Wynn, Patrick E. O'Neil, Stuart W. McGregor - Geological Survey of Alabama; Jeffrey R. Powell, Jennifer P. Grunewald, Anthony D. Ford - United States Fish and Wildlife Service; Paul D. Johnson and Jeffrey T. Garner - Alabama Department of Conservation and Natural Resources



Berry H. (Nick) Tew, Jr.
State Geologist



Alabama Rivers and Streams Network
www.alh2o.org

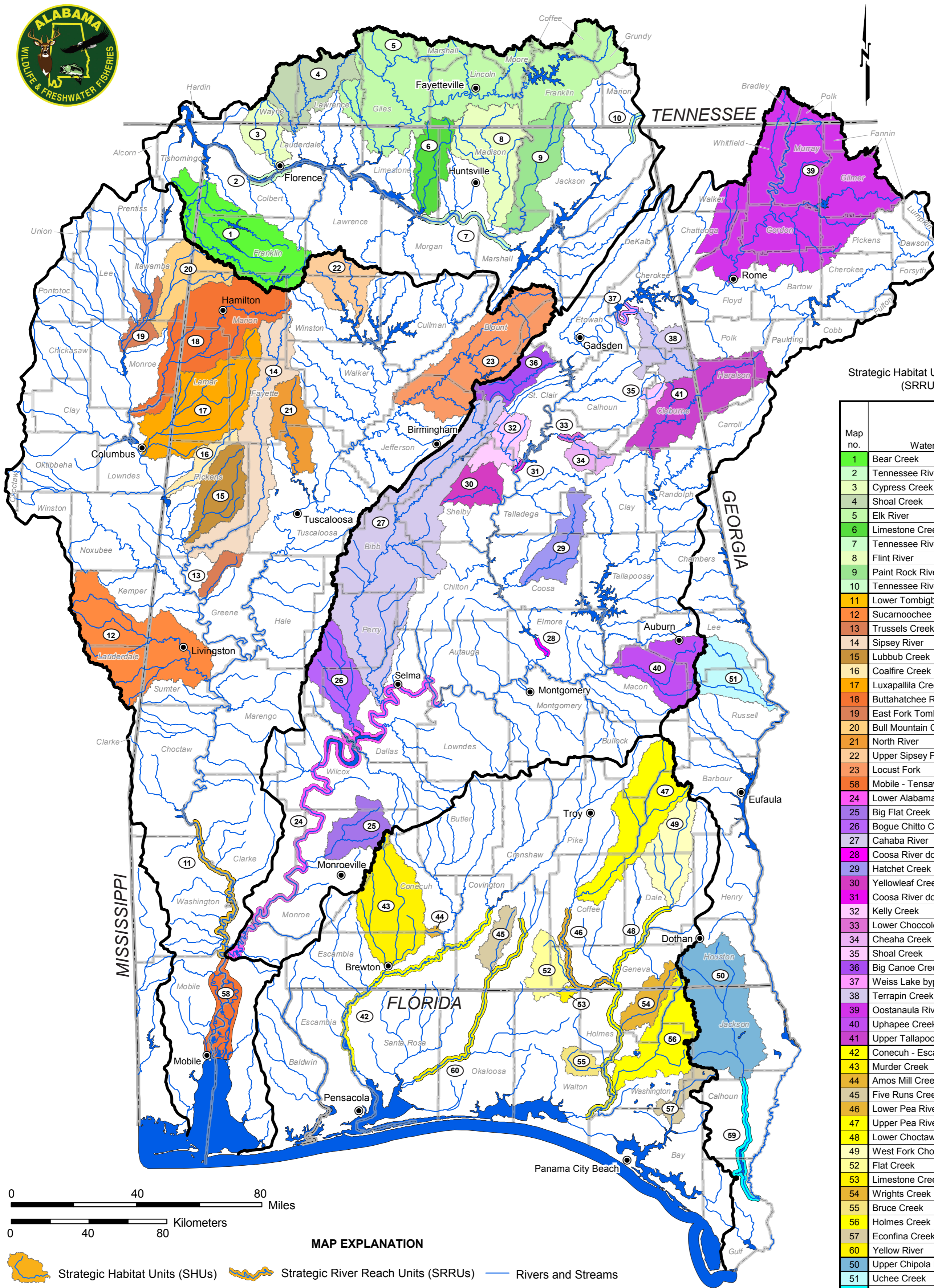
The Alabama Rivers and Streams Network has designated 46 watershed areas and 14 river and stream reaches in Alabama and neighboring states to focus management, recovery, and restoration activities for populations of rare fishes, mussels, snails, and crayfishes. These Strategic Habitat Units (SHUs) and Strategic River Reach Units (SRRUs) were selected based on the presence of federally listed (under the Endangered Species Act) and state imperiled species, essential habitat components required by these species to survive, and the vulnerability of these habitats to potential threats. The SHUs and SRRUs include a substantial part

of Alabama's remaining high-quality water courses and reflect the variety of aquatic habitats occupied by these species historically and presently. The map below displays the locations of the 46 SHUs and 14 SRRUs in Alabama and adjoining states. Colored polygons represent the watershed area of each SHU, with the exception of the Mobile-Tensaw River Delta SHU, which drains the entire Mobile River basin. Each SRRU represents the corridor of a major river or large stream. Each SHU and SRRU is also part of a larger National Hydrography Dataset (NHD) Hydrologic Unit (HU)-4 subregion. The index map displays the location of each HU-4 subregion.

Hydrologic Unit (HU)-4 subregions in Alabama and adjoining states

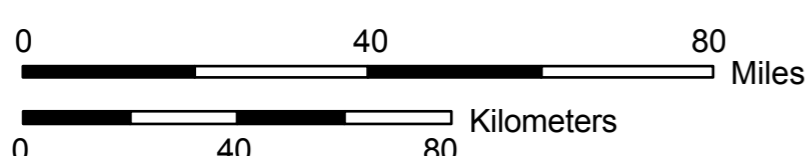
HU-4 Code	HU-4 name	Index map unit
0603	Middle Tennessee - Elk	1
0316	Mobile - Tombigbee	2
0315	Alabama	3
0314	Choctawhatchee - Escambia	4
0313	Apalachicola	5

Index map of HU-4 subregions in Alabama and adjacent states



Strategic Habitat Units (SHUs) and Strategic River Reach Units (SRRUs) in Alabama and adjoining states

Map no.	Watershed or river reach name	SHU	SRRU	HU-4 subregion
1	Bear Creek	X		1
2	Tennessee River downstream of Wilson Dam		X	1
3	Cypress Creek	X		1
4	Shoal Creek	X		1
5	Elk River	X		1
6	Limestone Creek	X		1
7	Tennessee River downstream of Guntersville Dam		X	1
8	Flint River	X		1
9	Paint Rock River	X		1
10	Tennessee River downstream of Nickajack Dam		X	1
11	Lower Tombigbee River		X	2
12	Sucarnoochee River	X		2
13	Trussels Creek	X		2
14	Sipsey River	X		2
15	Lubbub Creek	X		2
16	Coalfire Creek	X		2
17	Luxapallila Creek	X		2
18	Buttahatchee River	X		2
19	East Fork Tombigbee River	X		2
20	Bull Mountain Creek	X		2
21	North River	X		2
22	Upper Sipsey Fork	X		2
23	Locust Fork	X		2
24	Mobile - Tensaw River Delta	X		2
25	Lower Alabama River		X	3
26	Big Flat Creek	X		3
27	Bogue Chitto Creek	X		3
28	Cahaba River	X		3
29	Coosa River downstream of Jordan Dam		X	3
30	Hatchet Creek	X		3
31	Yellowleaf Creek	X		3
32	Coosa River downstream of Logan Martin Dam		X	3
33	Kelly Creek	X		3
34	Lower Choccolocco Creek		X	3
35	Cheaha Creek	X		3
36	Shoal Creek	X		3
37	Big Canoe Creek	X		3
38	Weiss Lake bypass (Old Coosa River)		X	3
39	Terrapin Creek	X		3
40	Oostanaula River	X		3
41	Uphapee Creek	X		3
42	Upper Tallapoosa River	X		3
43	Conecuh - Escambia River		X	4
44	Murder Creek	X		4
45	Amos Mill Creek	X		4
46	Five Runs Creek	X		4
47	Lower Pea River		X	4
48	Upper Pea River	X		4
49	Lower Choctawhatchee River		X	4
50	West Fork Choctawhatchee River	X		4
51	Flat Creek	X		4
52	Limestone Creek	X		4
53	Wrights Creek	X		4
54	Bruce Creek	X		4
55	Holmes Creek	X		4
56	Econfina Creek	X		4
57	Yellow River		X	4
58	Upper Chipola River	X		5
59	Uchee Creek	X		5
60	Lower Chipola River		X	5



MAP EXPLANATION

- Strategic Habitat Units (SHUs)
- Strategic River Reach Units (SRRUs)
- Rivers and Streams
- Open water
- State boundary
- County boundary
- HU-4 subregion boundary
- Cities