

# ***ALABAMA RIVERS AND STREAMS NETWORK (ARSN)***



*Locust Fork, Swann Bridge*

# ***The ARSN Team -- in part***

*CAWACO RC&D Council  
Geological Survey of Alabama  
ADCNR  
The Nature Conservancy  
Alabama Forestry Association  
Alabama Power Company  
Alabama Water Watch  
Power South Energy Coop  
Alabama Forestry Commission  
U.S. Fish and Wildlife Service  
ADEM  
NRCS  
Patton Geologics  
Fayette County  
City of Tuscaloosa  
World Wildlife Fund*

*CITIZENS AND LANDOWNERS  
Trutta Env. Solutions  
Auburn University  
University of Alabama  
U.S. Forest Service  
The Westervelt Company  
Univ. of West Alabama  
Jacksonville State Univ.  
Troy University  
Weyerhaeuser  
TVA  
GA Dept. of Natural Resources  
ALDOT  
Riverkeepers  
U.S. Geological Survey  
U.S. Army Corps of Engineers*

## ***Needs***

- *Ensure adequate water supplies for the future*
- *Manage watersheds for water quantity and quality*
- *Restore water quality*
- *Restore habitat*
- *Recover E&T species*

## ***Tools***

- *Clean Water Act*
- *Farm Bill*
- *Endangered Species Act*
- *Watershed partnerships*
- *SHUs*
- *Interdisciplinary watershed science*
- *SSAs*

***Framework***

***Partners***

***Money***



# *Alabama's Freshwater Biodiversity*



310 Native Fishes



180 Mussels



60+ Herps



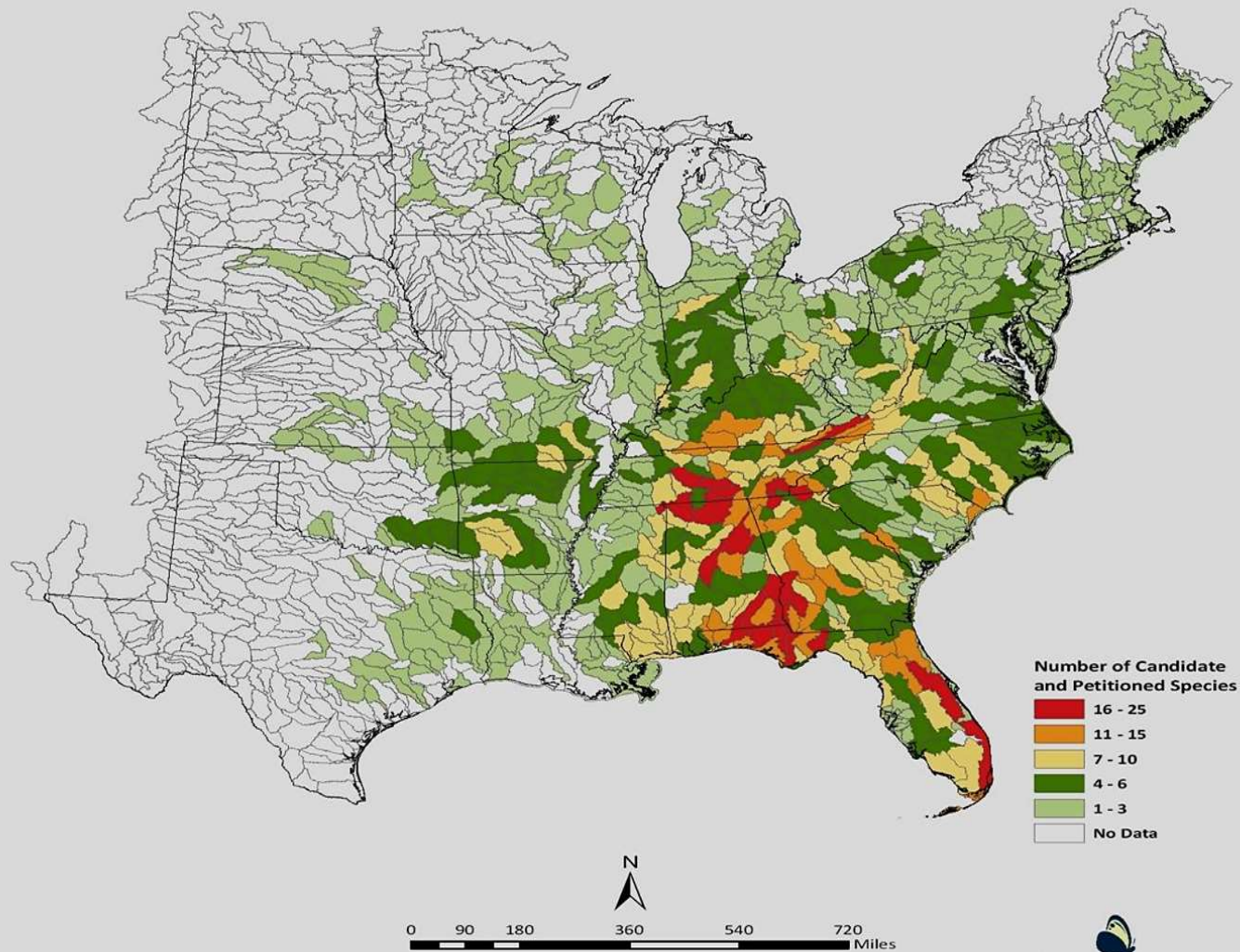
98 Crayfishes



160 Snails

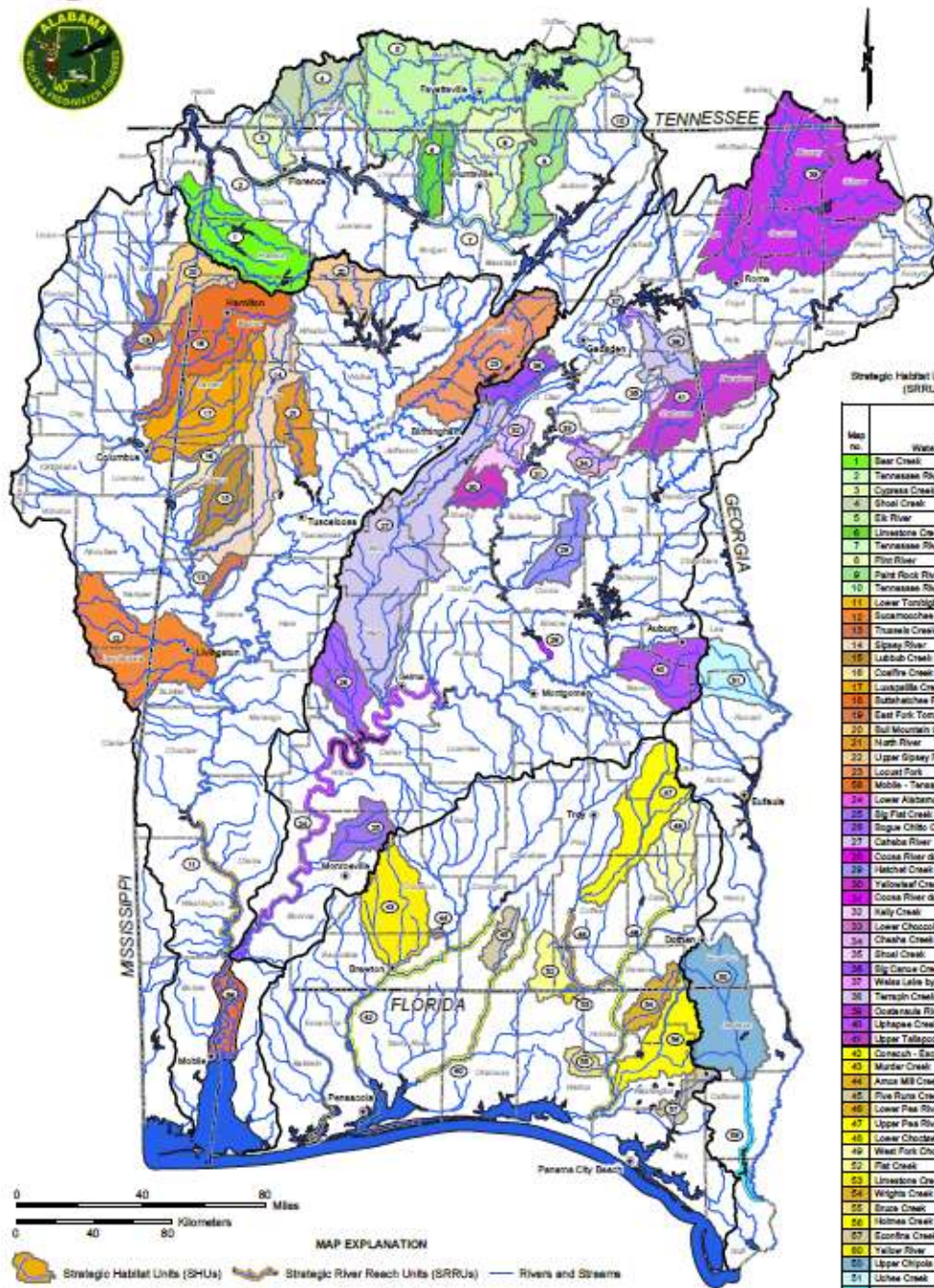


## Number of U.S. ESA Candidate and Petitioned Species by 8-Digit Watershed



*Note: Includes species observed since 1970. Fish and mussel data is supplemented by NatureServe's fish and mussel range distribution database. Petitioned species include only the 374 petitioned in the southeast.*





In Alabama and adjoining states

| HJ-4 Code | HJ-4 name               | Index map unit |
|-----------|-------------------------|----------------|
| 0003      | Middle Tennessee - Elk  | 1              |
| 0018      | Mobile - Tombigbee      | 2              |
| 0019      | Alabama                 | 3              |
| 0014      | Chotahatchee - Escambia | 4              |
| 0013      | Apalachicola            | 5              |



Strategic Habitat Units (SHUs) and Strategic River Reach Units (SRRUs) in Alabama and adjoining states

| Map no. | Watershed or river reach name                    | SHU | SRRU | HJ-4 subregion |
|---------|--------------------------------------------------|-----|------|----------------|
| 1       | Star Creek                                       | X   |      | 1              |
| 2       | Tennessee River downstream of Wilson Dam         | X   |      | 1              |
| 3       | Cypress Creek                                    | X   |      | 1              |
| 4       | Shoal Creek                                      | X   |      | 1              |
| 5       | Elk River                                        | X   |      | 1              |
| 6       | Unionsville Creek                                | X   |      | 1              |
| 7       | Tennessee River downstream of Guntersville Dam   | X   |      | 1              |
| 8       | Pine River                                       | X   |      | 1              |
| 9       | Pine Rock River                                  | X   |      | 1              |
| 10      | Tennessee River downstream of Nickajack Dam      | X   |      | 1              |
| 11      | Lower Tombigbee River                            | X   |      | 2              |
| 12      | Southernmost River                               | X   |      | 2              |
| 13      | Thomson Creek                                    | X   |      | 2              |
| 14      | Spiny River                                      | X   |      | 2              |
| 15      | Luttrell Creek                                   | X   |      | 2              |
| 16      | Coastline Creek                                  | X   |      | 2              |
| 17      | Luskville Creek                                  | X   |      | 2              |
| 18      | Butcher Creek                                    | X   |      | 2              |
| 19      | East Fork Tombigbee River                        | X   |      | 2              |
| 20      | South Mountain Creek                             | X   |      | 2              |
| 21      | North River                                      | X   |      | 2              |
| 22      | Upper Spiny Fork                                 | X   |      | 2              |
| 23      | Locust Fork                                      | X   |      | 2              |
| 24      | Mobile - Tennessee River Delta                   | X   |      | 2              |
| 25      | Lower Alabama River                              | X   |      | 3              |
| 26      | Big Flat Creek                                   | X   |      | 3              |
| 27      | Rogue Chitto Creek                               | X   |      | 3              |
| 28      | Catahouchee River                                | X   |      | 3              |
| 29      | Catahouchee River downstream of Jordan Dam       | X   |      | 3              |
| 30      | Hatch Creek                                      | X   |      | 3              |
| 31      | Yellowleaf Creek                                 | X   |      | 3              |
| 32      | Catahouchee River downstream of Logan Martin Dam | X   |      | 3              |
| 33      | Kelly Creek                                      | X   |      | 3              |
| 34      | Lower Chattahoochee Creek                        | X   |      | 3              |
| 35      | Chattahoochee Creek                              | X   |      | 3              |
| 36      | Shoal Creek                                      | X   |      | 3              |
| 37      | Big Cypress Creek                                | X   |      | 3              |
| 38      | White Lake Spring (Old Catahouchee River)        | X   |      | 3              |
| 39      | Tennish Creek                                    | X   |      | 3              |
| 40      | Catahouchee River                                | X   |      | 3              |
| 41      | Upper Tallapoosa River                           | X   |      | 3              |
| 42      | Conasauga - Escambia River                       | X   |      | 4              |
| 43      | Murder Creek                                     | X   |      | 4              |
| 44      | Amos Mill Creek                                  | X   |      | 4              |
| 45      | Pine Run Creek                                   | X   |      | 4              |
| 46      | Lower Pine River                                 | X   |      | 4              |
| 47      | Upper Pine River                                 | X   |      | 4              |
| 48      | Lower Chattahoochee River                        | X   |      | 4              |
| 49      | West Fork Chattahoochee River                    | X   |      | 4              |
| 50      | Flat Creek                                       | X   |      | 4              |
| 51      | Unionsville Creek                                | X   |      | 4              |
| 52      | Wright Creek                                     | X   |      | 4              |
| 53      | Bruck Creek                                      | X   |      | 4              |
| 54      | Holmes Creek                                     | X   |      | 4              |
| 55      | Scottna Creek                                    | X   |      | 4              |
| 56      | Yellow River                                     | X   |      | 4              |
| 57      | Upper Chippa River                               | X   |      | 5              |
| 58      | Lower Chippa River                               | X   |      | 5              |

**Total 312 species**

- *Mussels – 97*
- *Snails – 49*
- *Crayfishes – 37*
- *Fishes – 102*
- *Herptiles – 26*
- *Mammals - 1*

by  
E. Anne Wynn, Patrick E. O'Neil, and Stuart McGregor - Geological Survey of Alabama;  
Jeffrey R. Powell, Jennifer M. Pritchett, and Anthony D. Ford - U.S. Fish and Wildlife Service;  
and Paul D. Johnson - Alabama Department of Conservation and Natural Resources



| Species                  | Conservation status | Mediterranean (2016) subgroups |      |   |   |   |   |   |   |   |    | Mediterranean (2016) subgroups |    |    |    |    |    |    |    |    |    | Chetumal (2016) subgroups |    |    |    |    |    |    |    |    |    | Mediterranean (2016) subgroups |    |    |    |    |    |    |    |    |    |    |    |
|--------------------------|---------------------|--------------------------------|------|---|---|---|---|---|---|---|----|--------------------------------|----|----|----|----|----|----|----|----|----|---------------------------|----|----|----|----|----|----|----|----|----|--------------------------------|----|----|----|----|----|----|----|----|----|----|----|
|                          |                     | Mediterranean (2016) subgroups |      |   |   |   |   |   |   |   |    | Mediterranean (2016) subgroups |    |    |    |    |    |    |    |    |    | Chetumal (2016) subgroups |    |    |    |    |    |    |    |    |    | Mediterranean (2016) subgroups |    |    |    |    |    |    |    |    |    |    |    |
|                          |                     | 1                              | 2    | 3 | 4 | 5 | 6 | 7 | 8 | 9 | 10 | 11                             | 12 | 13 | 14 | 15 | 16 | 17 | 18 | 19 | 20 | 21                        | 22 | 23 | 24 | 25 | 26 | 27 | 28 | 29 | 30 | 31                             | 32 | 33 | 34 | 35 | 36 | 37 | 38 | 39 | 40 |    |    |
| Scientific name          | Common name         | UNEP                           | Alt. | 1 | 2 | 3 | 4 | 5 | 6 | 7 | 8  | 9                              | 10 | 11 | 12 | 13 | 14 | 15 | 16 | 17 | 18 | 19                        | 20 | 21 | 22 | 23 | 24 | 25 | 26 | 27 | 28 | 29                             | 30 | 31 | 32 | 33 | 34 | 35 | 36 | 37 | 38 | 39 | 40 |
| <b>Bombus</b>            |                     |                                |      |   |   |   |   |   |   |   |    |                                |    |    |    |    |    |    |    |    |    |                           |    |    |    |    |    |    |    |    |    |                                |    |    |    |    |    |    |    |    |    |    |    |
| <i>Bombus terrestris</i> | Common bumblebee    | LC                             | LC   |   |   |   |   |   |   |   |    |                                |    |    |    |    |    |    |    |    |    |                           |    |    |    |    |    |    |    |    |    |                                |    |    |    |    |    |    |    |    |    |    |    |
| <i>Bombus lucorum</i>    | Common bumblebee    | LC                             | LC   |   |   |   |   |   |   |   |    |                                |    |    |    |    |    |    |    |    |    |                           |    |    |    |    |    |    |    |    |    |                                |    |    |    |    |    |    |    |    |    |    |    |
| <i>Bombus agrorum</i>    | Common bumblebee    | LC                             | LC   |   |   |   |   |   |   |   |    |                                |    |    |    |    |    |    |    |    |    |                           |    |    |    |    |    |    |    |    |    |                                |    |    |    |    |    |    |    |    |    |    |    |
| <i>Bombus terrestris</i> | Common bumblebee    | LC                             | LC   |   |   |   |   |   |   |   |    |                                |    |    |    |    |    |    |    |    |    |                           |    |    |    |    |    |    |    |    |    |                                |    |    |    |    |    |    |    |    |    |    |    |
| <i>Bombus lucorum</i>    | Common bumblebee    | LC                             | LC   |   |   |   |   |   |   |   |    |                                |    |    |    |    |    |    |    |    |    |                           |    |    |    |    |    |    |    |    |    |                                |    |    |    |    |    |    |    |    |    |    |    |
| <i>Bombus agrorum</i>    | Common bumblebee    | LC                             | LC   |   |   |   |   |   |   |   |    |                                |    |    |    |    |    |    |    |    |    |                           |    |    |    |    |    |    |    |    |    |                                |    |    |    |    |    |    |    |    |    |    |    |
| <i>Bombus terrestris</i> | Common bumblebee    | LC                             | LC   |   |   |   |   |   |   |   |    |                                |    |    |    |    |    |    |    |    |    |                           |    |    |    |    |    |    |    |    |    |                                |    |    |    |    |    |    |    |    |    |    |    |
| <i>Bombus lucorum</i>    | Common bumblebee    | LC                             | LC   |   |   |   |   |   |   |   |    |                                |    |    |    |    |    |    |    |    |    |                           |    |    |    |    |    |    |    |    |    |                                |    |    |    |    |    |    |    |    |    |    |    |
| <i>Bombus agrorum</i>    | Common bumblebee    | LC                             | LC   |   |   |   |   |   |   |   |    |                                |    |    |    |    |    |    |    |    |    |                           |    |    |    |    |    |    |    |    |    |                                |    |    |    |    |    |    |    |    |    |    |    |
| <i>Bombus terrestris</i> | Common bumblebee    | LC                             | LC   |   |   |   |   |   |   |   |    |                                |    |    |    |    |    |    |    |    |    |                           |    |    |    |    |    |    |    |    |    |                                |    |    |    |    |    |    |    |    |    |    |    |
| <i>Bombus lucorum</i>    | Common bumblebee    | LC                             | LC   |   |   |   |   |   |   |   |    |                                |    |    |    |    |    |    |    |    |    |                           |    |    |    |    |    |    |    |    |    |                                |    |    |    |    |    |    |    |    |    |    |    |
| <i>Bombus agrorum</i>    | Common bumblebee    | LC                             | LC   |   |   |   |   |   |   |   |    |                                |    |    |    |    |    |    |    |    |    |                           |    |    |    |    |    |    |    |    |    |                                |    |    |    |    |    |    |    |    |    |    |    |
| <i>Bombus terrestris</i> | Common bumblebee    | LC                             | LC   |   |   |   |   |   |   |   |    |                                |    |    |    |    |    |    |    |    |    |                           |    |    |    |    |    |    |    |    |    |                                |    |    |    |    |    |    |    |    |    |    |    |
| <i>Bombus lucorum</i>    | Common bumblebee    | LC                             | LC   |   |   |   |   |   |   |   |    |                                |    |    |    |    |    |    |    |    |    |                           |    |    |    |    |    |    |    |    |    |                                |    |    |    |    |    |    |    |    |    |    |    |
| <i>Bombus agrorum</i>    | Common bumblebee    | LC                             | LC   |   |   |   |   |   |   |   |    |                                |    |    |    |    |    |    |    |    |    |                           |    |    |    |    |    |    |    |    |    |                                |    |    |    |    |    |    |    |    |    |    |    |
| <i>Bombus terrestris</i> | Common bumblebee    | LC                             | LC   |   |   |   |   |   |   |   |    |                                |    |    |    |    |    |    |    |    |    |                           |    |    |    |    |    |    |    |    |    |                                |    |    |    |    |    |    |    |    |    |    |    |
| <i>Bombus lucorum</i>    | Common bumblebee    | LC                             | LC   |   |   |   |   |   |   |   |    |                                |    |    |    |    |    |    |    |    |    |                           |    |    |    |    |    |    |    |    |    |                                |    |    |    |    |    |    |    |    |    |    |    |
| <i>Bombus agrorum</i>    | Common bumblebee    | LC                             | LC   |   |   |   |   |   |   |   |    |                                |    |    |    |    |    |    |    |    |    |                           |    |    |    |    |    |    |    |    |    |                                |    |    |    |    |    |    |    |    |    |    |    |
| <i>Bombus terrestris</i> | Common bumblebee    | LC                             | LC   |   |   |   |   |   |   |   |    |                                |    |    |    |    |    |    |    |    |    |                           |    |    |    |    |    |    |    |    |    |                                |    |    |    |    |    |    |    |    |    |    |    |
| <i>Bombus lucorum</i>    | Common bumblebee    | LC                             | LC   |   |   |   |   |   |   |   |    |                                |    |    |    |    |    |    |    |    |    |                           |    |    |    |    |    |    |    |    |    |                                |    |    |    |    |    |    |    |    |    |    |    |
| <i>Bombus agrorum</i>    | Common bumblebee    | LC                             | LC   |   |   |   |   |   |   |   |    |                                |    |    |    |    |    |    |    |    |    |                           |    |    |    |    |    |    |    |    |    |                                |    |    |    |    |    |    |    |    |    |    |    |
| <i>Bombus terrestris</i> | Common bumblebee    | LC                             | LC   |   |   |   |   |   |   |   |    |                                |    |    |    |    |    |    |    |    |    |                           |    |    |    |    |    |    |    |    |    |                                |    |    |    |    |    |    |    |    |    |    |    |
| <i>Bombus lucorum</i>    | Common bumblebee    | LC                             | LC   |   |   |   |   |   |   |   |    |                                |    |    |    |    |    |    |    |    |    |                           |    |    |    |    |    |    |    |    |    |                                |    |    |    |    |    |    |    |    |    |    |    |
| <i>Bombus agrorum</i>    | Common bumblebee    | LC                             | LC   |   |   |   |   |   |   |   |    |                                |    |    |    |    |    |    |    |    |    |                           |    |    |    |    |    |    |    |    |    |                                |    |    |    |    |    |    |    |    |    |    |    |
| <i>Bombus terrestris</i> | Common bumblebee    | LC                             | LC   |   |   |   |   |   |   |   |    |                                |    |    |    |    |    |    |    |    |    |                           |    |    |    |    |    |    |    |    |    |                                |    |    |    |    |    |    |    |    |    |    |    |
| <i>Bombus lucorum</i>    | Common bumblebee    | LC                             | LC   |   |   |   |   |   |   |   |    |                                |    |    |    |    |    |    |    |    |    |                           |    |    |    |    |    |    |    |    |    |                                |    |    |    |    |    |    |    |    |    |    |    |
| <i>Bombus agrorum</i>    | Common bumblebee    | LC                             | LC   |   |   |   |   |   |   |   |    |                                |    |    |    |    |    |    |    |    |    |                           |    |    |    |    |    |    |    |    |    |                                |    |    |    |    |    |    |    |    |    |    |    |
| <i>Bombus terrestris</i> | Common bumblebee    | LC                             | LC   |   |   |   |   |   |   |   |    |                                |    |    |    |    |    |    |    |    |    |                           |    |    |    |    |    |    |    |    |    |                                |    |    |    |    |    |    |    |    |    |    |    |
| <i>Bombus lucorum</i>    | Common bumblebee    | LC                             | LC   |   |   |   |   |   |   |   |    |                                |    |    |    |    |    |    |    |    |    |                           |    |    |    |    |    |    |    |    |    |                                |    |    |    |    |    |    |    |    |    |    |    |
| <i>Bombus agrorum</i>    | Common bumblebee    | LC                             | LC   |   |   |   |   |   |   |   |    |                                |    |    |    |    |    |    |    |    |    |                           |    |    |    |    |    |    |    |    |    |                                |    |    |    |    |    |    |    |    |    |    |    |
| <i>Bombus terrestris</i> | Common bumblebee    | LC                             | LC   |   |   |   |   |   |   |   |    |                                |    |    |    |    |    |    |    |    |    |                           |    |    |    |    |    |    |    |    |    |                                |    |    |    |    |    |    |    |    |    |    |    |
| <i>Bombus lucorum</i>    | Common bumblebee    | LC                             | LC   |   |   |   |   |   |   |   |    |                                |    |    |    |    |    |    |    |    |    |                           |    |    |    |    |    |    |    |    |    |                                |    |    |    |    |    |    |    |    |    |    |    |
| <i>Bombus agrorum</i>    | Common bumblebee    | LC                             | LC   |   |   |   |   |   |   |   |    |                                |    |    |    |    |    |    |    |    |    |                           |    |    |    |    |    |    |    |    |    |                                |    |    |    |    |    |    |    |    |    |    |    |
| <i>Bombus terrestris</i> | Common bumblebee    | LC                             | LC   |   |   |   |   |   |   |   |    |                                |    |    |    |    |    |    |    |    |    |                           |    |    |    |    |    |    |    |    |    |                                |    |    |    |    |    |    |    |    |    |    |    |
| <i>Bombus lucorum</i>    | Common bumblebee    | LC                             | LC   |   |   |   |   |   |   |   |    |                                |    |    |    |    |    |    |    |    |    |                           |    |    |    |    |    |    |    |    |    |                                |    |    |    |    |    |    |    |    |    |    |    |
| <i>Bombus agrorum</i>    | Common bumblebee    | LC                             | LC   |   |   |   |   |   |   |   |    |                                |    |    |    |    |    |    |    |    |    |                           |    |    |    |    |    |    |    |    |    |                                |    |    |    |    |    |    |    |    |    |    |    |
| <i>Bombus terrestris</i> | Common bumblebee    | LC                             | LC   |   |   |   |   |   |   |   |    |                                |    |    |    |    |    |    |    |    |    |                           |    |    |    |    |    |    |    |    |    |                                |    |    |    |    |    |    |    |    |    |    |    |
| <i>Bombus lucorum</i>    | Common bumblebee    | LC                             | LC   |   |   |   |   |   |   |   |    |                                |    |    |    |    |    |    |    |    |    |                           |    |    |    |    |    |    |    |    |    |                                |    |    |    |    |    |    |    |    |    |    |    |
| <i>Bombus agrorum</i>    | Common bumblebee    | LC                             | LC   |   |   |   |   |   |   |   |    |                                |    |    |    |    |    |    |    |    |    |                           |    |    |    |    |    |    |    |    |    |                                |    |    |    |    |    |    |    |    |    |    |    |
| <i>Bombus terrestris</i> | Common bumblebee    | LC                             | LC   |   |   |   |   |   |   |   |    |                                |    |    |    |    |    |    |    |    |    |                           |    |    |    |    |    |    |    |    |    |                                |    |    |    |    |    |    |    |    |    |    |    |
| <i>Bombus lucorum</i>    | Common bumblebee    | LC                             | LC   |   |   |   |   |   |   |   |    |                                |    |    |    |    |    |    |    |    |    |                           |    |    |    |    |    |    |    |    |    |                                |    |    |    |    |    |    |    |    |    |    |    |
| <i>Bombus agrorum</i>    | Common bumblebee    | LC                             | LC   |   |   |   |   |   |   |   |    |                                |    |    |    |    |    |    |    |    |    |                           |    |    |    |    |    |    |    |    |    |                                |    |    |    |    |    |    |    |    |    |    |    |
| <i>Bombus terrestris</i> | Common bumblebee    | LC                             | LC   |   |   |   |   |   |   |   |    |                                |    |    |    |    |    |    |    |    |    |                           |    |    |    |    |    |    |    |    |    |                                |    |    |    |    |    |    |    |    |    |    |    |
| <i>Bombus lucorum</i>    | Common bumblebee    | LC                             | LC   |   |   |   |   |   |   |   |    |                                |    |    |    |    |    |    |    |    |    |                           |    |    |    |    |    |    |    |    |    |                                |    |    |    |    |    |    |    |    |    |    |    |
| <i>Bombus agrorum</i>    | Common bumblebee    | LC                             | LC   |   |   |   |   |   |   |   |    |                                |    |    |    |    |    |    |    |    |    |                           |    |    |    |    |    |    |    |    |    |                                |    |    |    |    |    |    |    |    |    |    |    |
| <i>Bombus terrestris</i> | Common bumblebee    | LC                             | LC   |   |   |   |   |   |   |   |    |                                |    |    |    |    |    |    |    |    |    |                           |    |    |    |    |    |    |    |    |    |                                |    |    |    |    |    |    |    |    |    |    |    |
| <i>Bombus lucorum</i>    | Common bumblebee    | LC                             | LC   |   |   |   |   |   |   |   |    |                                |    |    |    |    |    |    |    |    |    |                           |    |    |    |    |    |    |    |    |    |                                |    |    |    |    |    |    |    |    |    |    |    |
| <i>Bombus agrorum</i>    | Common bumblebee    | LC                             | LC   |   |   |   |   |   |   |   |    |                                |    |    |    |    |    |    |    |    |    |                           |    |    |    |    |    |    |    |    |    |                                |    |    |    |    |    |    |    |    |    |    |    |
| <i>Bombus terrestris</i> | Common bumblebee    | LC                             | LC   |   |   |   |   |   |   |   |    |                                |    |    |    |    |    |    |    |    |    |                           |    |    |    |    |    |    |    |    |    |                                |    |    |    |    |    |    |    |    |    |    |    |
| <i>Bombus lucorum</i>    | Common bumblebee    | LC                             | LC   |   |   |   |   |   |   |   |    |                                |    |    |    |    |    |    |    |    |    |                           |    |    |    |    |    |    |    |    |    |                                |    |    |    |    |    |    |    |    |    |    |    |
| <i>Bombus agrorum</i>    | Common bumblebee    | LC                             | LC   |   |   |   |   |   |   |   |    |                                |    |    |    |    |    |    |    |    |    |                           |    |    |    |    |    |    |    |    |    |                                |    |    |    |    |    |    |    |    |    |    |    |
| <i>Bombus terrestris</i> | Common bumblebee    | LC                             | LC   |   |   |   |   |   |   |   |    |                                |    |    |    |    |    |    |    |    |    |                           |    |    |    |    |    |    |    |    |    |                                |    |    |    |    |    |    |    |    |    |    |    |
| <i>Bombus lucorum</i>    | Common bumblebee    | LC                             | LC   |   |   |   |   |   |   |   |    |                                |    |    |    |    |    |    |    |    |    |                           |    |    |    |    |    |    |    |    |    |                                |    |    |    |    |    |    |    |    |    |    |    |
| <i>Bombus agrorum</i>    | Common bumblebee    | LC                             | LC   |   |   |   |   |   |   |   |    |                                |    |    |    |    |    |    |    |    |    |                           |    |    |    |    |    |    |    |    |    |                                |    |    |    |    |    |    |    |    |    |    |    |
| <i>Bombus terrestris</i> | Common bumblebee    | LC                             | LC   |   |   |   |   |   |   |   |    |                                |    |    |    |    |    |    |    |    |    |                           |    |    |    |    |    |    |    |    |    |                                |    |    |    |    |    |    |    |    |    |    |    |
| <i>Bombus lucorum</i>    | Common bumblebee    | LC                             | LC   |   |   |   |   |   |   |   |    |                                |    |    |    |    |    |    |    |    |    |                           |    |    |    |    |    |    |    |    |    |                                |    |    |    |    |    |    |    |    |    |    |    |
| <i>Bombus agrorum</i>    | Common bumblebee    | LC                             | LC   |   |   |   |   |   |   |   |    |                                |    |    |    |    |    |    |    |    |    |                           |    |    |    |    |    |    |    |    |    |                                |    |    |    |    |    |    |    |    |    |    |    |
| <i>Bombus terrestris</i> | Common bumblebee    | LC                             | LC   |   |   |   |   |   |   |   |    |                                |    |    |    |    |    |    |    |    |    |                           |    |    |    |    |    |    |    |    |    |                                |    |    |    |    |    |    |    |    |    |    |    |
| <i>Bombus lucorum</i>    | Common bumblebee    | LC                             | LC   |   |   |   |   |   |   |   |    |                                |    |    |    |    |    |    |    |    |    |                           |    |    |    |    |    |    |    |    |    |                                |    |    |    |    |    |    |    |    |    |    |    |





**Assess  
Restore  
Recover  
Monitor**

***The Process***



***Fayette County***

***Citizens and Landowners***

***North River Partnership***

***The Team***