



Rush Darter Fish Passage

Turkey Creek Nature Preserve



2018: New Rush Darter
(*Etheostoma phytophilum*)
population found in unnamed
tributary to Turkey Creek during
Spring Bioblitz by Dr. Kuhajda



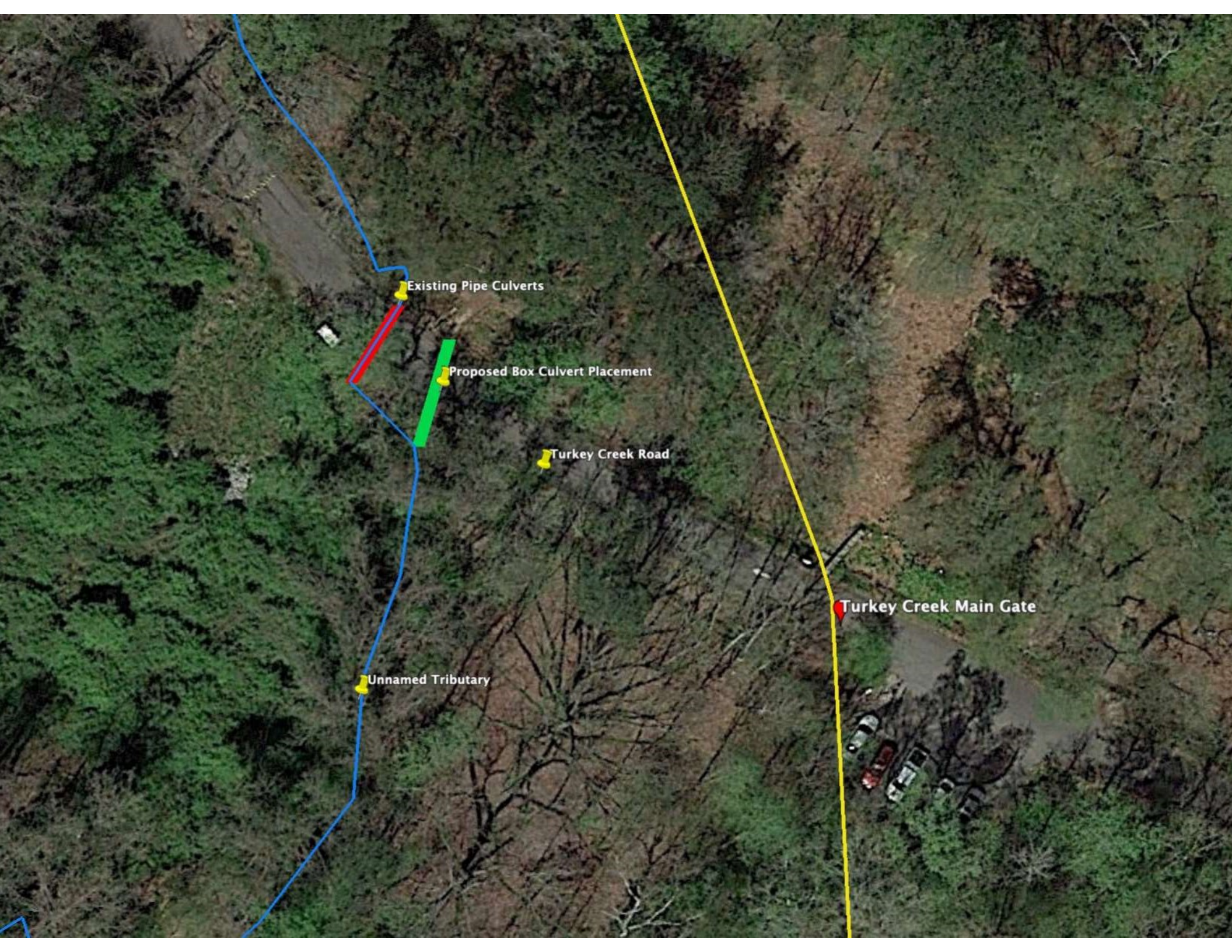
Problem: Two culverts
concrete pipe culverts in
unnamed tributary at Turkey
Creek Road, are undersized
and restrict upstream migration
during high flow.



Solution

- ❖ Replace existing round culverts with larger box culvert
- ❖ Shift culvert location to return natural hydrologic flow to tributary
- ❖ Set culvert bottom below grade to ensure flow





Existing Pipe Culverts

Proposed Box Culvert Placement

Turkey Creek Road

Turkey Creek Main Gate

Unnamed Tributary

Implementation: October 14th -17th, 2020





Completed Project



Partner Support

- ❖ Geological Survey- The Nature Conservancy
- ❖ Culvert Construction - USFW, Fish Passage
- ❖ Site work/Implementation - Bob Rast, Rast Construction Inc. (donated)
- ❖ Additional Costs and Paving - The Freshwater Land Trust, Mohammed bid Zayed Species Conservation Fund, Conservation International

