

STATE OF ALABAMA  
DEPARTMENT OF LABOR

MINING AND RECLAMATION DIVISION  
Abandoned Mine Lands  
Program



DUSTIN MORIN  
STATE MINE LAND RECLAMATION  
SUPERVISOR

LES KEARLEY P.E.  
CHIEF ENGINEERING &  
CONSTRUCTION

## SURFACE MINING CONTROL AND RECLAMATION ACT OF 1977 (SMCRA)

### Purpose:

Establish a nationwide program to protect society and the environment from the adverse effects of surface coal mining operations & promote reclamation of mined areas left without adequate restoration prior to 1977

## AML PRIORITIES

### **Federal Oversight Agency U.S. OSMRE (DOI)**

- Annual Grants Distribution
- E-AMLIS Inventory

### **AML Priority Ranking**

- PI -Extreme Danger to Public Health and Safety
- PII -Hazardous to Public Health and Safety

---

- PIII -Environmental - only when incidental to PI/PII

*\*AL State plan recently amended to include an AMD set-aside fund to address strictly AMD environmental issues*

### **Inventory (AMLIS)**

- ADOL Established
- Citizen Complaints
- Constantly Updating

# AML PRIORITIES

## **Qualifying Safety Features**

- Surface/Strip Mines
- (DH, HWB, DI, DPE, IRW, Slides, HEF)

## **Surface effects of underground mining**

- (Safety: Mine Openings, refuse/gob piles DPE or Fires, Subsidence)

## **Emergencies**

- Fires (Labuco / Adger Slope Portal / Marvel I & II)
- Sudden Occurrence Subsidence

## AML RESPONSIBILITIES

- 1) **Program Coordination With OSM**
- 2) **Project Funding and Development**
  - Priority Qualification
  - NEPA Clearances
  - Fed/State Permits (USFWS, COE, ADEM)
- 3) **Landowner Consent/Cooperation**
- 4) **Engineering & Construction Design**
- 5) **Construction – 100% Inspection Monitoring**
- 6) **2 Year Post Monitoring Program**

## FUNDING

### Severance Tax on Mined Coal Tonnages

- \$0.28/T – Surface Mined
- \$0.12/T – Underground Mined

The amount states and tribes receive each year in annual payments depend on the fees collected during the previous fiscal year

# RECENT FEES PAID BY ALABAMA INDUSTRY

Alabama  
EY 2018, ending June 30, 2018

TABLE 1

COAL PRODUCED FOR SALE , TRANSFER, OR USE <sup>A</sup>			
(Millions of short tons)			
Calendar Year	Surface Mines	Underground Mines	Total
2014	4.4	13.3	17.7
2015	3.4	10.3	13.7
2016	2.3	7.4	9.7
2017	2.6	10.5	13.1

<sup>A</sup> Coal production is the gross tonnage (short tons) and includes coal produced during the calendar year (CY) for sale, transfer or use. The coal produced in each CY quarter is reported by each mining company to OSM during the following quarter on line 8(a) of form OSM-1, "Coal Reclamation Fee Report." Gross tonnage does not provide for a moisture reduction. OSM verifies tonnage reported through routine auditing of mining companies. This production may vary from that reported by other sources due to varying methods of determining and reporting coal production.



## WHAT DOES AML DO WITH FEES?

<b>Project Type</b>	<b>2014</b>	<b>2015</b>	<b>2016</b>	<b>2017</b>	<b>2014- 2017</b>
Regular AML	\$2,862,488	\$2,975,060	\$1,721,942	\$4,291,159	37 Projects Completed
Emergencies	\$86,741	\$7,540	\$13,444	\$16,037	9 ER Abated
Maintenance	\$330,094	\$192,404	\$192,854	\$48,675	Maintenance on 75 sites
Tree Planting	\$46,969	\$11,019	\$13,168	\$3,776	Reforested 139 Acres
<b>TOTAL Project Costs</b>	<b>\$3,326,291</b>	<b>\$3,186,022</b>	<b>\$1,941,408</b>	<b>\$4,359,646</b>	<b>\$12,813,368</b>
<b>Fees Paid by AL Industry</b>	<b>\$2,828,000</b>	<b>\$2,188,000</b>	<b>\$1,532,000</b>	<b>\$1,988,000</b>	<b>\$8,536,000</b>

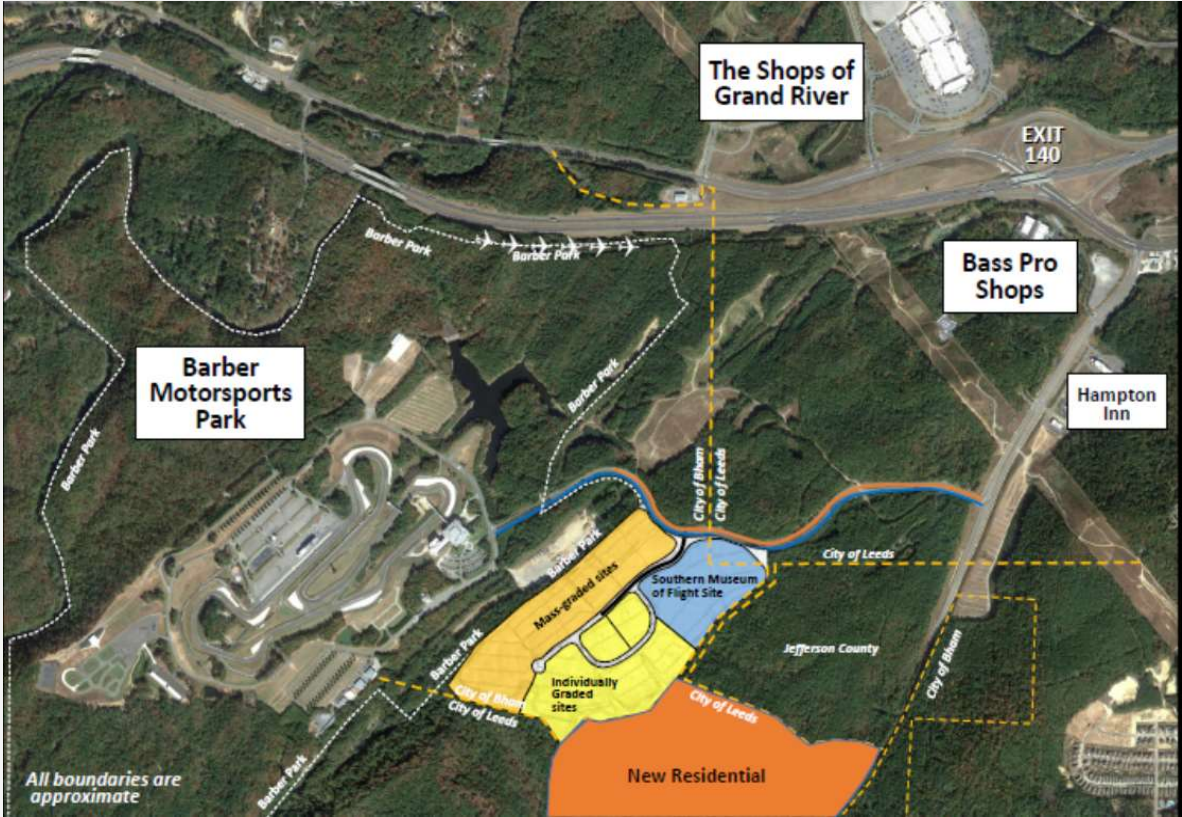
## AML PILOT PROGRAM

### **PURPOSE:**

2017-2020

-OSMRE has made funding available for projects in the Abandoned Mine Land Reclamation Fiscal Year 2019 Economic Development Pilot Program (AML Pilot). This pilot program will provide grants to the six Appalachian states with the highest amount of unfunded Priority 1 and Priority 2 Abandoned Mine Land (AML) sites based on OSMRE AML inventory data as of September 30, 2016. The following states will each receive \$25 million - Kentucky, Pennsylvania, and West Virginia; while Alabama, Ohio, and Virginia will each receive \$10 million in order to accelerate the remediation of AML sites with economic and community development end uses. The intent of the pilot program is to explore and implement strategies to return legacy coal sites to productive uses

# GRAND RIVER PILOT PROJECT



# SICARD HOLLOW PILOT PROJECT





BIBB COUNTY, MARVEL GOB FIRE II



\*This project is the 3<sup>rd</sup> Gob fire extinguished by the AML program in this small community

BIBB COUNTY, PIPER II PROJECT





WALKER COUNTY, RADIANT CITY ROAD PROJECT



\*This dangerous highwall & impoundment was the site of two separate fatalities prior to reclamation by the AML program

JEFFERSON COUNTY, RUFFNER MOUNTAIN MINE # 2





QUESTIONS?